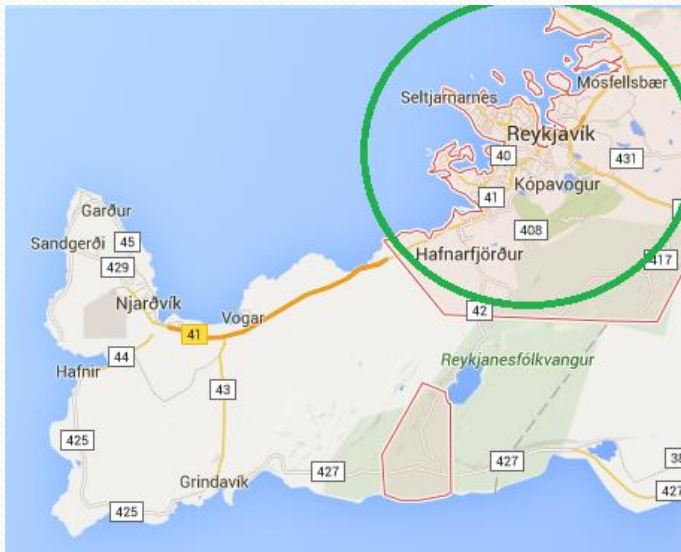


Icelandic Facts

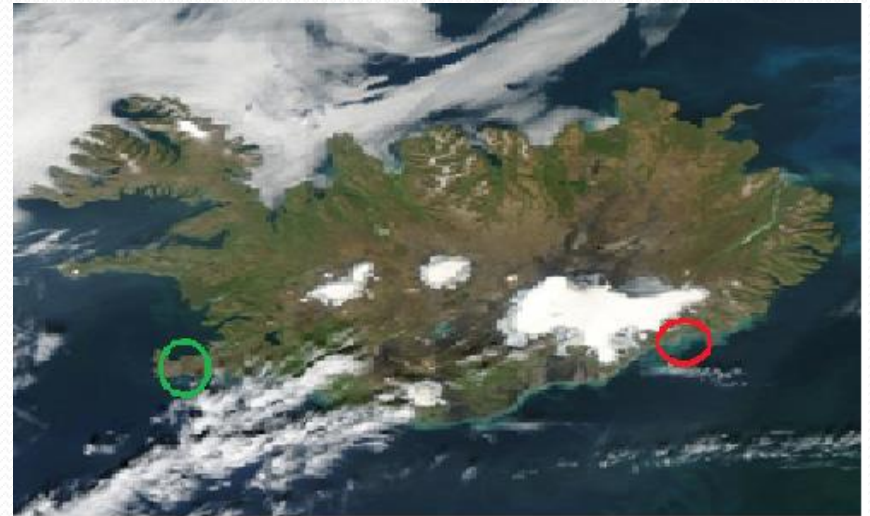


Iceland

- Population: 329.100 (1.Jan. 2015)
- Square km: 103,440 km²
- Capital: Reykjavík



This is the Capital area



We live at the red circle

Water resources in Iceland

- Electricity production
- Heat up houses
- Clean water
- Hotsprings

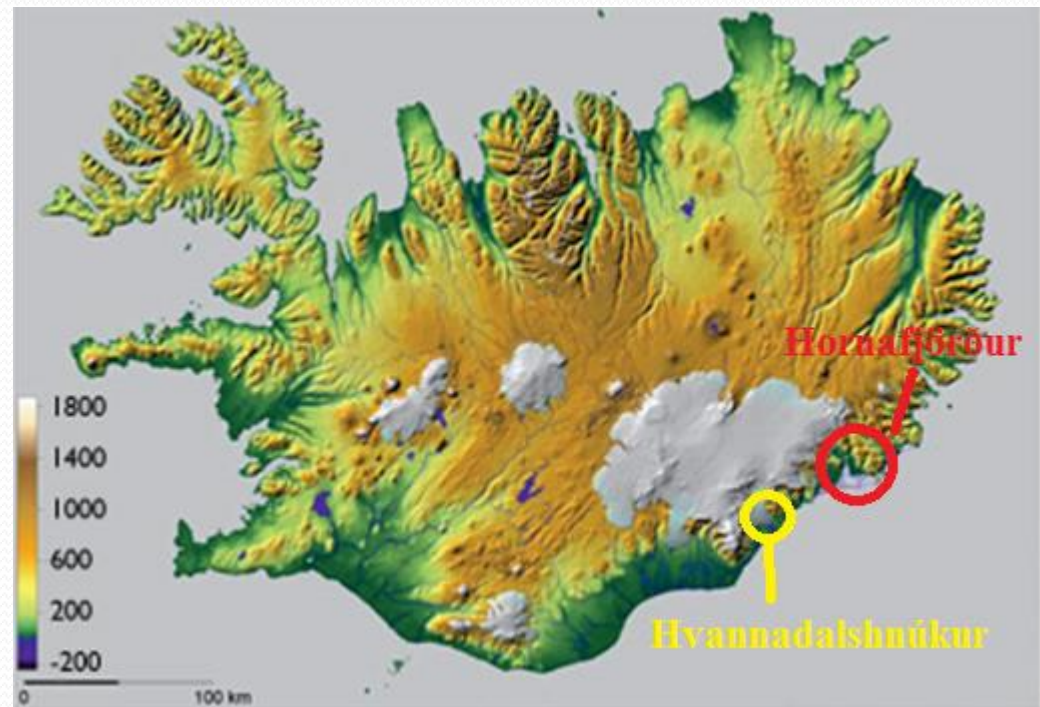


Highlands and lowlands of Iceland

- Highlands cover 75%
- Lowlands cover 25%
- Highest peak: 2109m



The top of Hvannadalshnúkur – the highest peak

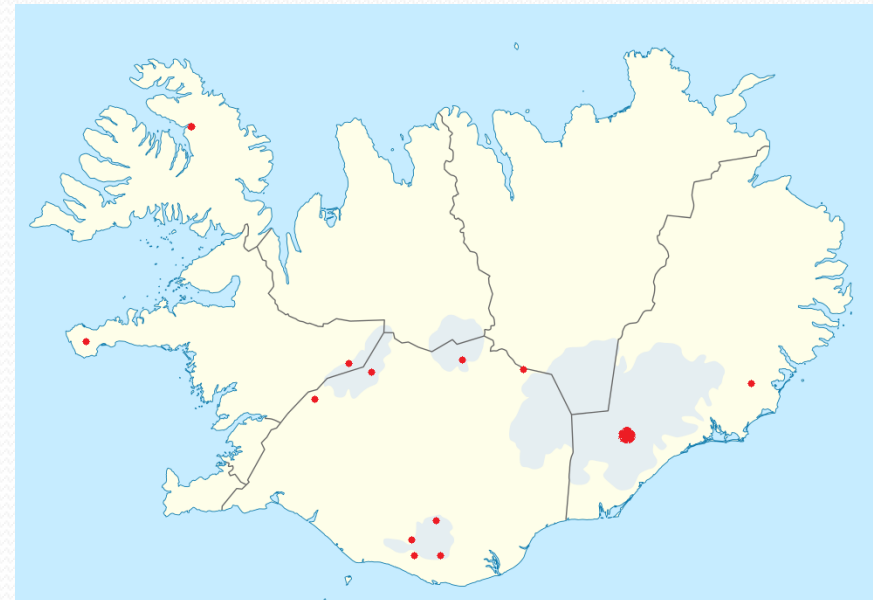


Glaciers in Iceland

- Cover 11% of the land
- Glacier Vatnajökull is the third largest glacier in the world



Volcanos under glaciers



Red dots are Glaciers

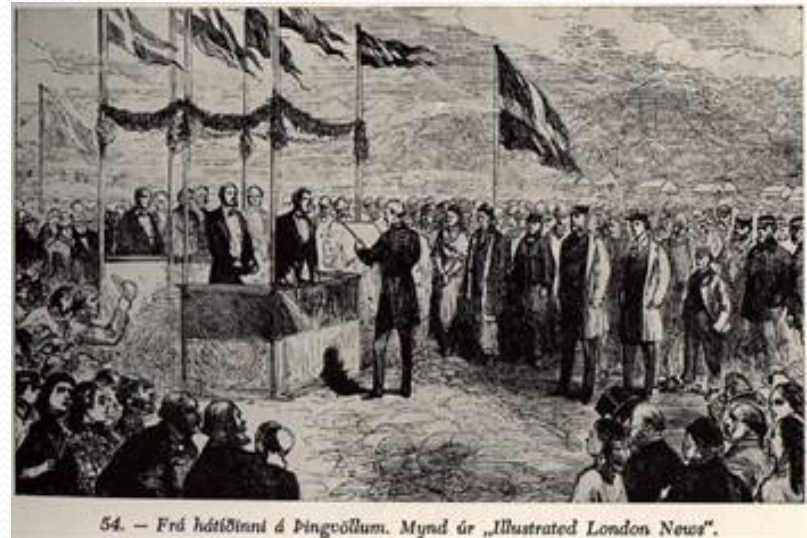
Vatnajökull

- Largest glacier in Europe
- 8100 sq. km
- Volcanically active



Alþingi

- Oldest Parliament in the world
- Founded in 930



Government structure in Iceland



First woman president



Our president to day

Economic sectors

- Main industries in Iceland:

1. Fishing industry

- 8% of the workforce
- 40% of the nation export



Agriculture

- In 2013 about 4% (4900) people were working in the agriculture



Tourism

- 8% people in the country working with tourism
- In 2015 about 1.2 million tourists will visit Iceland.
- Each year 25% more tourists are expected



Industry

- 25% (about 30-35 thousand) people in Iceland are working in industry
- Aluminium is the biggest industry
- About 800.000 tonns of aluminium are exported each year



Some strange facts about Iceland



- There are no trains in Iceland
- Icelanders have a lot of cars
- For each 1000 persons there are 500 cars



We are always online

- There are 97% in Iceland who use the internet



Only bright on 21st June

- On 21st June it is daylight 24 hours.



On 21st December only dark

- On 21st December is dark about 19 - 20 hours

